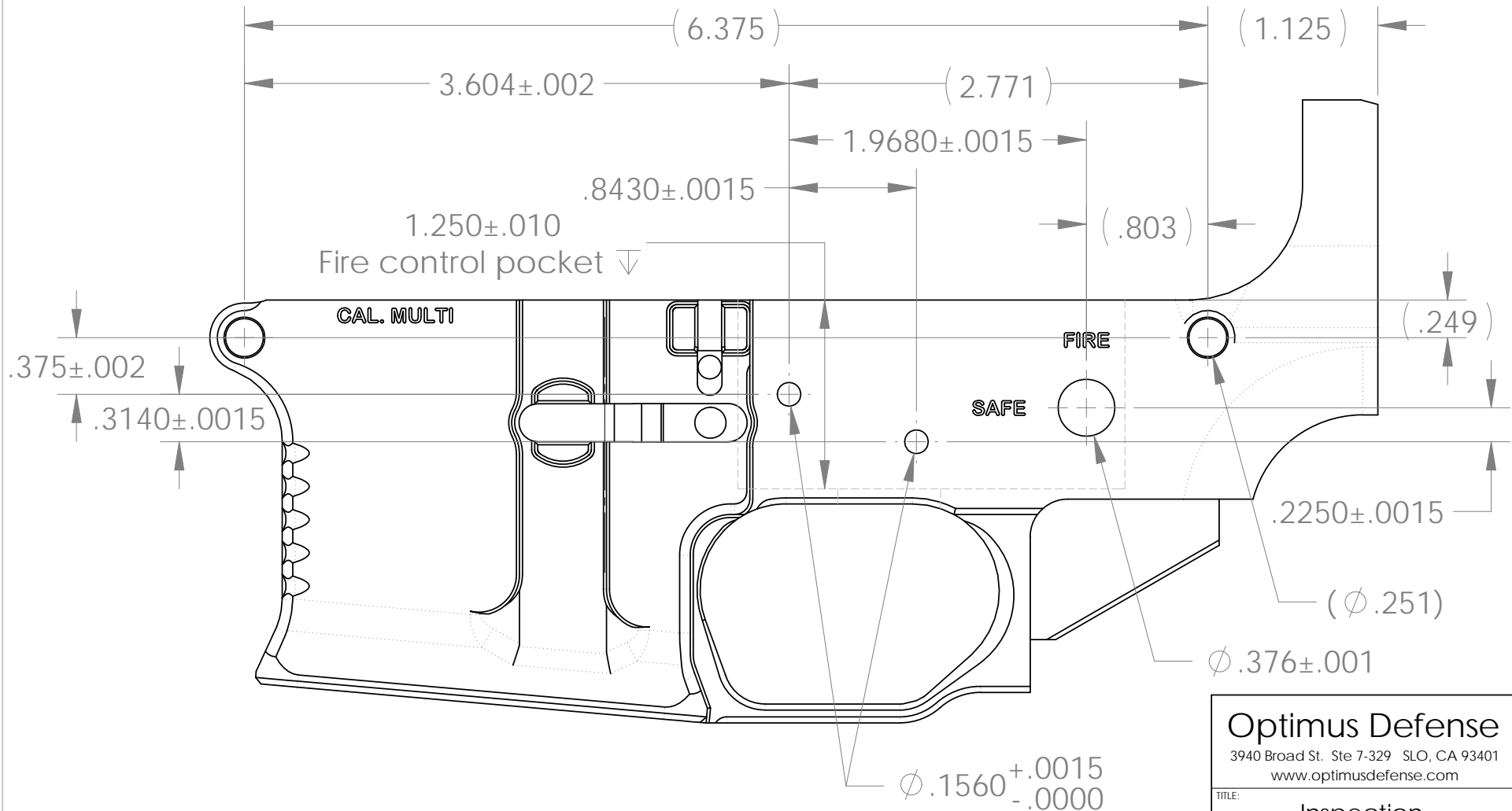


All dimensions and tolerances are mil-spec, except for reference dimensions.

Drill holes as accurately as possible, but twice the mil-spec tolerance will probably be fine.

Dimensions shown in () are for reference.

REVISIONS				APPR. BY
REV	BY	DATE	DESCRIPTION	



Optimus Defense
 3940 Broad St. Ste 7-329 SLO, CA 93401
 www.optimusdefense.com

TITLE: **Inspection**

PROJECT:	DWG. NO.
AR-15	XXXXXX
SIZE: A	SCALE: 1/1
SHEET: 1 OF 2	REV: -

PROPRIETARY <small>THE INFORMATION CONTAINED IN THIS DRAWING IS THE SOLE PROPERTY OF OPTIMUS DEFENSE. ANY REPRODUCTION IN PART OR AS A WHOLE WITHOUT THE WRITTEN PERMISSION OF OPTIMUS DEFENSE IS PROHIBITED.</small>	MATERIAL:	<small>UNLESS OTHERWISE SPECIFIED: DIMENSIONS ARE IN INCHES TOLERANCES: FRACTIONS: ±.015 DECIMALS: ±.000 ANGULAR: ±.5° INTERIEST GEOMETRIC TOLERANCING PER: ANSI/ASME Y14.5-1994</small>	DESIGNED	BY	DATE
	7075-T651		DRAWN	XXX	00/00/00
	FINISH:		ENG APPR.	XXX	00/00/00
	Vibro		MFG APPR.	XXX	00/00/00

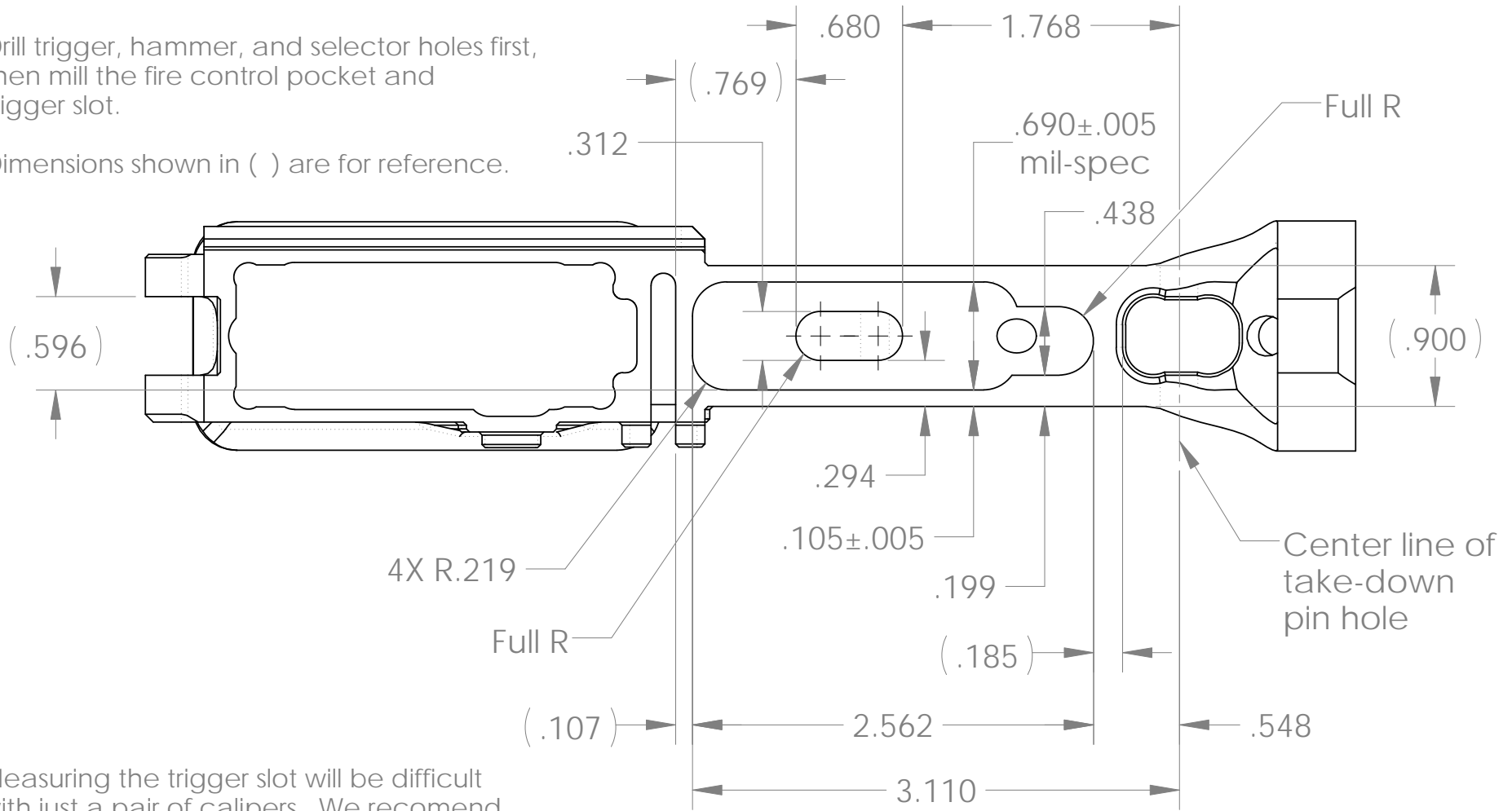
REVISIONS				APPR. BY
REV	BY	DATE	DESCRIPTION	

Dimensions for easy manufacturing and measurement, not mil-spec.

Unless specified, +/- .015 tolerance should be good, but +/- .005 would be better.

Drill trigger, hammer, and selector holes first, then mill the fire control pocket and trigger slot.

Dimensions shown in () are for reference.



Measuring the trigger slot will be difficult with just a pair of calipers. We recommend assembling the hammer, trigger, and selector as a final check.

Try to mill the .690 inside width of the fire control pocket as accurately as possible. If it comes out too large, it will probably still work, but will just be a little sloppy.

Optimus Defense
 3940 Broad St. Ste 7-329 SLO, CA 93401
 www.optimusdefense.com

TITLE: **Inspection**

PROJECT: **AR-15** DWG. NO. **XXXXXX**

SIZE: **A** SCALE: **1/1** SHEET: **2 OF 2** REV: **-**

PROPRIETARY <small>THE INFORMATION CONTAINED IN THIS DRAWING IS THE SOLE PROPERTY OF OPTIMUS DEFENSE. ANY REPRODUCTION IN PART OR AS A WHOLE WITHOUT THE WRITTEN PERMISSION OF OPTIMUS DEFENSE IS PROHIBITED.</small>	MATERIAL:	<small>UNLESS OTHERWISE SPECIFIED: DIMENSIONS ARE IN INCHES TOLERANCES: FRACTIONS: ±.015 DECIMALS: ±.015 ANGULAR: ± 5° INTERPRET GEOMETRIC TOLERANCING PER: ANSI/ASME Y14.5-1994</small>	DESIGNED	BY	DATE
	7075-T651		DRAWN	XXX	00/00/00
	FINISH:		ENG APPR.	XXX	00/00/00
	VIBRO		MFG APPR.	XXX	00/00/00